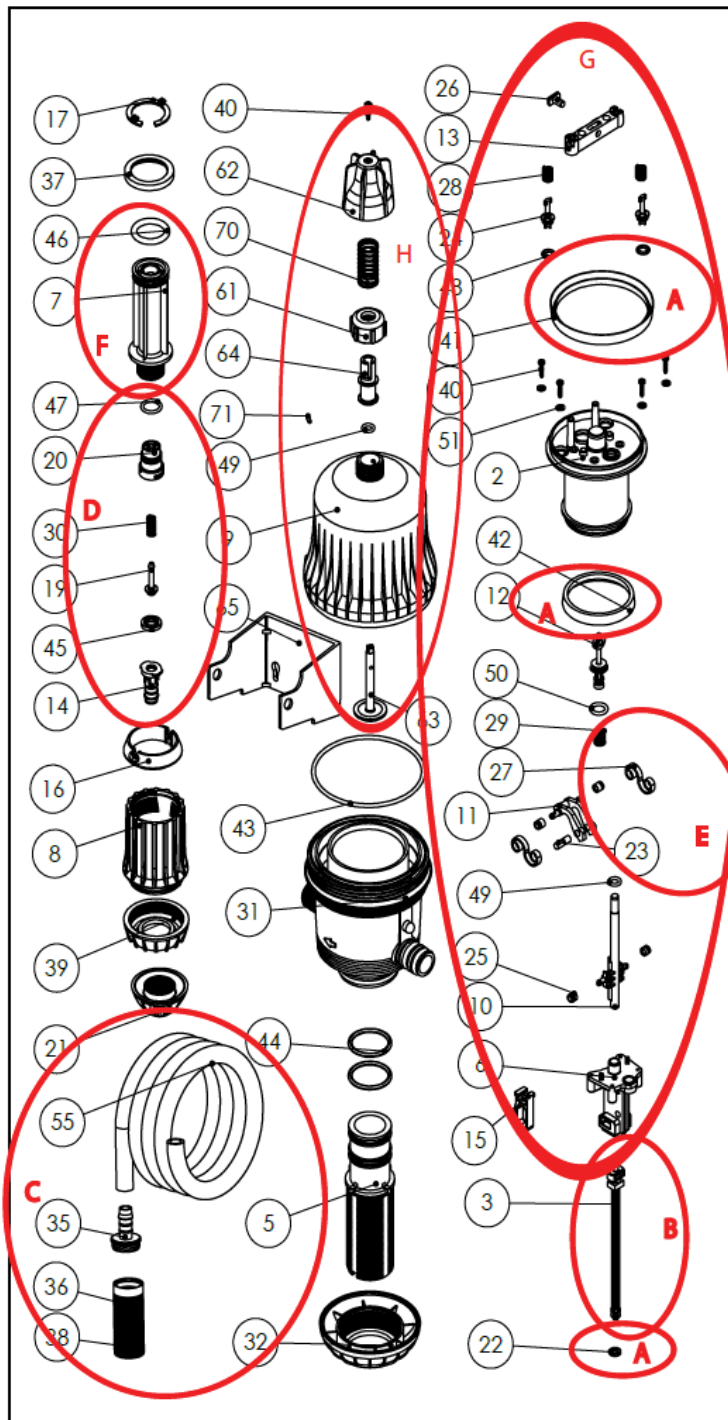


# DEMA®

## 1405 0.5 to 5%



| No.                | Description   | Kit/Part #  |
|--------------------|---|-------------|
| A                  | Lip Seal Kit, 5% Models, 14GPM, LFR (1405)          | 36300000001 |
| B                  | 14-Series Connecting Bar/Piston Kit w/O-ring (1405) | 36300000003 |
| C                  | Suction Tube Kit - 1/2" ID tube & Strainer          | 36000000021 |
| D                  | Check Valve Kit                                     | 36000000128 |
| E                  | Engine Spring Kit                                   | 36000000191 |
| F                  | 14-Series 5% Suction Cylinder Kit (1405), w/ O-ring | 36300000005 |
| G                  | Engine Repair Kit, 14-Series MixRite                | 36300000019 |
| H                  | On/Off Dome Cover                                   | 36300000044 |
|                    | Air Release Dome Cover                              | 36300000058 |
| 5                  | Mixrite 1405 Cylinder Support, No O-ring            | 36302051205 |
| 8                  | 14-Series Adjustment Sleeve                         | 36305003808 |
| 16                 | 14-Series Mixrite Adjustment Sleeve Scale Insert    | 36316003966 |
| 17                 | 14-Series MixRite Chemical Cylinder Clip            | 36317001167 |
| 21                 | 14-Series Check Valve nut                           | 36307003234 |
| 22                 | Chemical Piston Seal, 1405                          | 38000032022 |
| 31                 | MixRite Body, 14-Series, 3/4" threads               | 36030162231 |
| 32                 | Cylinder Support Nut, 14-Series/500-Series          | 36030161532 |
| 37                 | 14-Series MixRite Chemical Cylinder Spacer          | 36315003176 |
| 39                 | 14-Series Latch Nut for Adjustment Sleeve           | 36306003139 |
| 43                 | Dome Cover O-ring                                   | 38022430243 |
| 44                 | Cylinder Support O-ring, 500 & 14-Series            | 38022205244 |
| 46                 | 1402 Chemical Cylinder O-ring                       | 38022175246 |
| 65                 | Mounting Bracket                                    | 36030162765 |
| <b>Accessories</b> |   |             |
|                    | Pressure Regulator                                  | 38030200001 |
|                    | 3/4" Inline Strainer                                | 50.41.1     |
|                    | Anti Siphon Valve                                   | 36073008002 |
|                    | 3/4" NPTF Check Valve                               | 57.20.8     |
|                    | 3/4" NPTF PVC Ball Valve                            | 93.180.2    |