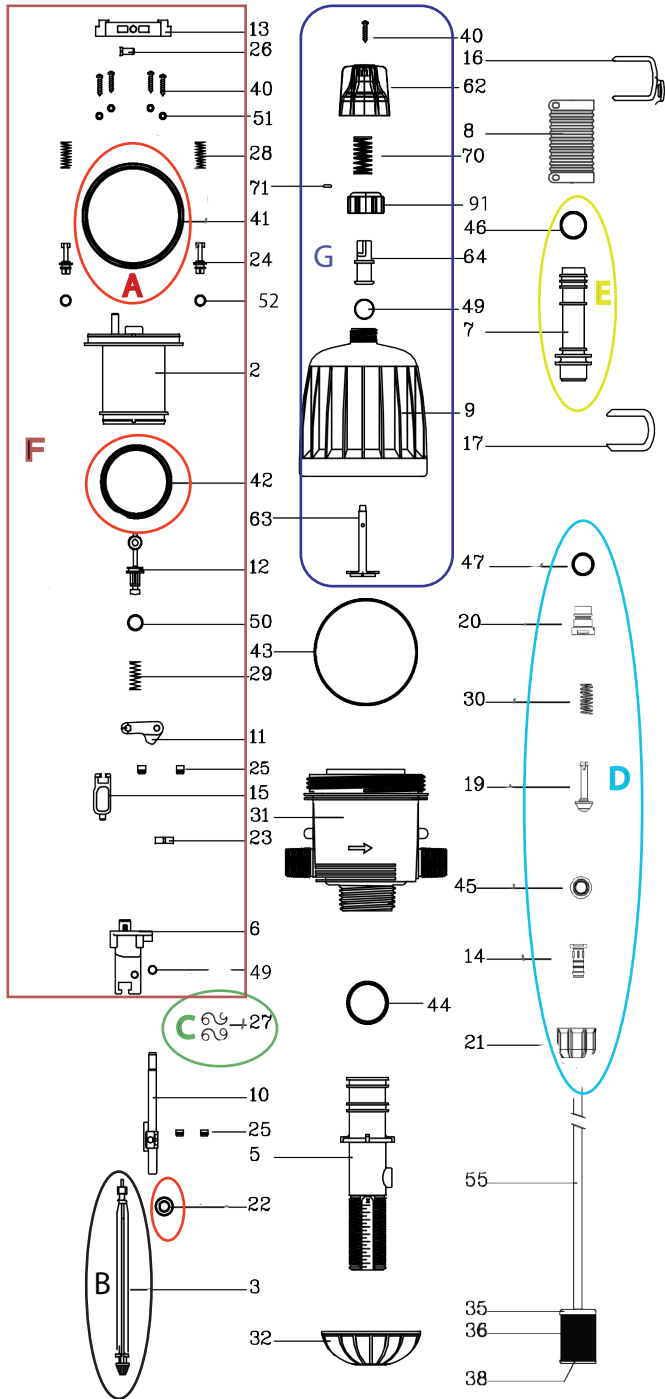


DEMA®

569PVDFONOFF 0.1 to 0.9%



| No. | Description | Kit/Part # |
|-------------|---|-------------|
| A | MixRite 569 Lip Seal Kit, LFR | 3600000095 |
| B | 569 Piston connecting bar kit, with o-ring (.1-.9%) | 3600000148 |
| C | Engine Spring Kit | 36000000191 |
| D | Check Valve Kit | 36000000147 |
| E | Mixrite .1-.9% Chemical Cylinder and O-ring | 36000000199 |
| F | Engine Repair Kit, 569 MixRite | 36000000136 |
| G | On/Off Dome Cover | 36000000174 |
| 5 | 569 1% Cylinder Support, No O-ring | 36302012205 |
| 8 | 569 Adjustment Sleeve | 36305003808 |
| 21 | Check Valve nut | 36307003234 |
| 22 | MixRite 569 Chemical Piston Seal, Viton Extreme | 36000030122 |
| 31 | MixRite Body, 3/4" threads | 36020019131 |
| 32 | Cylinder Support Nut, (White) | 36015014132 |
| 35, 36, 38 | Suction Filter, w/ 10mm barb | 36000000171 |
| 43 | Dome Cover O-ring | 38022430243 |
| 44 | Cylinder Support O-ring, 500 & 14-Series | 38022205244 |
| 46 | MixRite 569 Chemical Cylinder O-ring | 38023135246 |
| | Mounting Bracket (Not Shown) | 36030162765 |
| Accessories | | |
| | Pressure Regulator | 38030200001 |
| | 3/4" Inline Strainer | 50.41.1 |
| | Anti Siphon Valve | 36073008002 |
| | 3/4" NPTF Check Valve | 57.20.8 |
| | 3/4" NPTF PVC Ball Valve | 93.180.2 |