

ParFX™

TRIPLANE™

REDEFINING LED GROW LIGHTING



P.L. LIGHT SYSTEMS



TRIPLANE™

REDEFINING LED GROW LIGHTING

As the first luminaire in the ParFX™ product family, the TriPlane leverages the best features of LED and HID technologies — high light output, controlled distribution, optimized efficiencies and exceptional thermal management.

The TriPlane sets a new standard for LED horticultural lighting as a true 1-for-1 replacement of the 1000W HID luminaire and delivers the ideal combination of performance and efficiency.

2100
μmol/s*

3.2
μmol/J*

*RWMB Spectrum HO

DESIGNED FOR FUNCTIONAL FLEXIBILITY

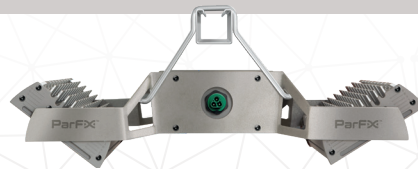
Designed for maximum flexibility, the TriPlane's LED modules can be field-adjusted independently in precise increments in either direction — allowing for highly customized light distribution, depending on the application.



Standard Distribution



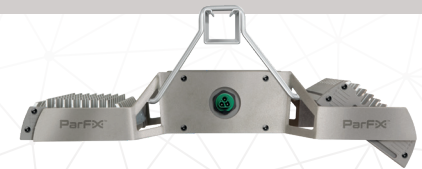
Wide Distribution



Focused Distribution



Asymmetric Distribution



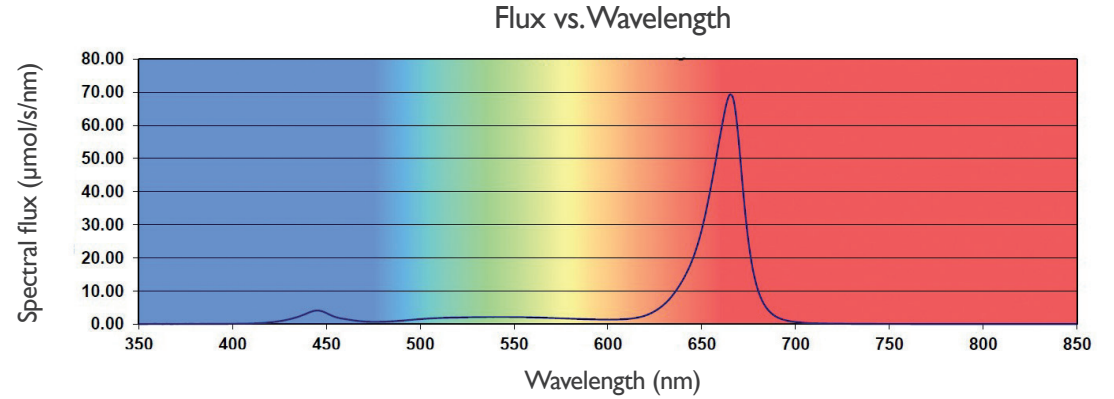
DELIVERING OPTIMUM COLOR EFFICIENCIES,

the TriPlane is available in two spectral recipes which can be used in standalone LED applications, or in combination with HID luminaires for hybrid applications.



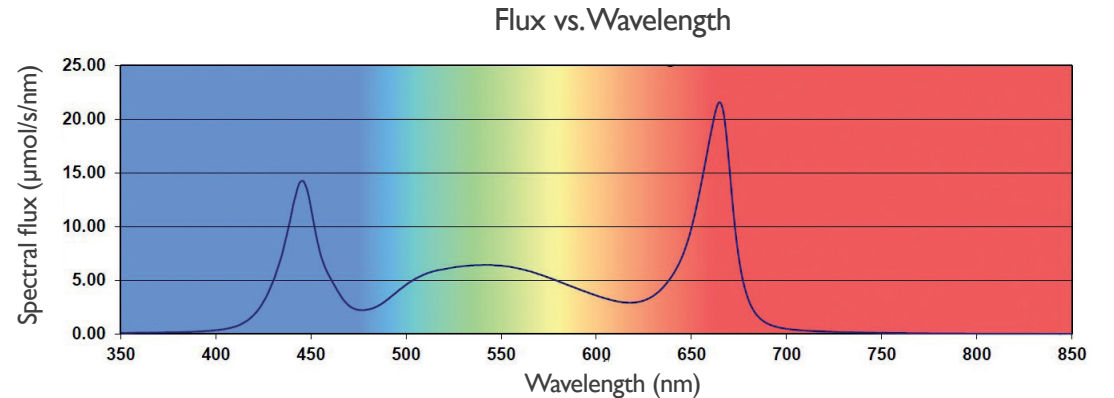
RWMB Spectrum

High efficiency spectrum with peaks in the red and blue wavelengths, optimized for supplementary lighting applications



Daylight Spectrum

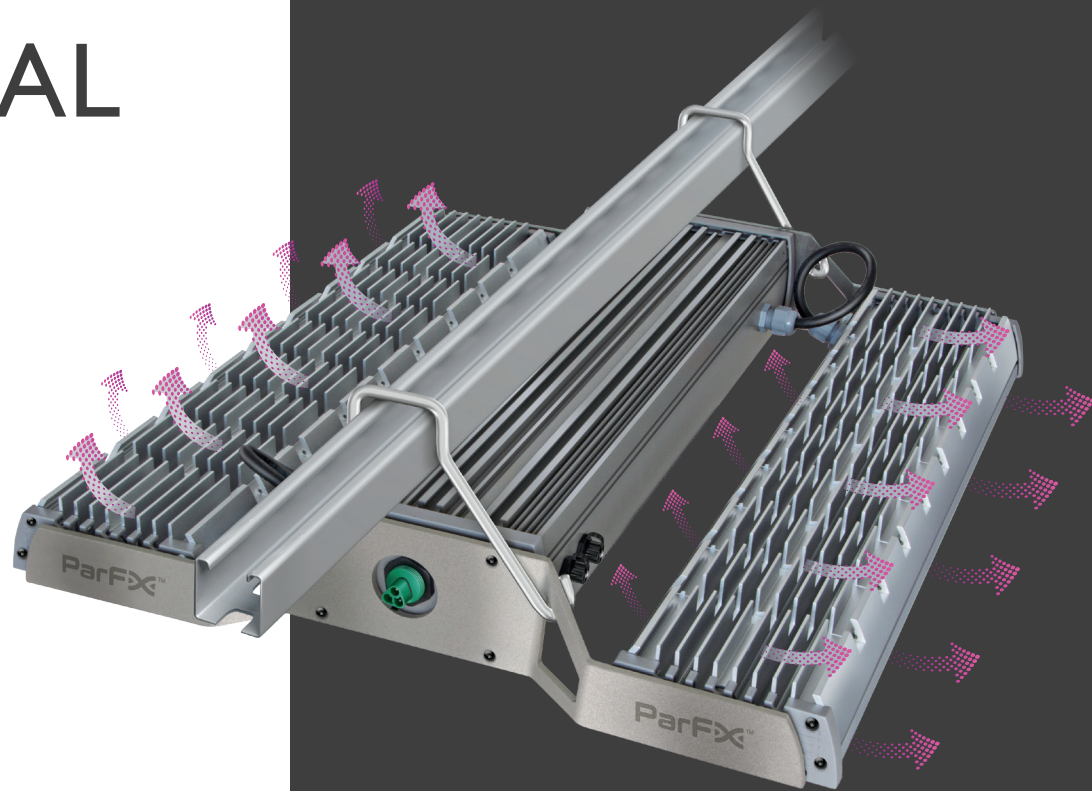
Broad spectrum white light, optimized for sole-source lighting applications



ENGINEERED FOR OPTIMAL THERMAL MANAGEMENT

The TriPlane is thermally and mechanically engineered for optimal thermal management — maximizing the lifetime of the luminaire, reducing heat stress on the plants and lowering HVAC loads.

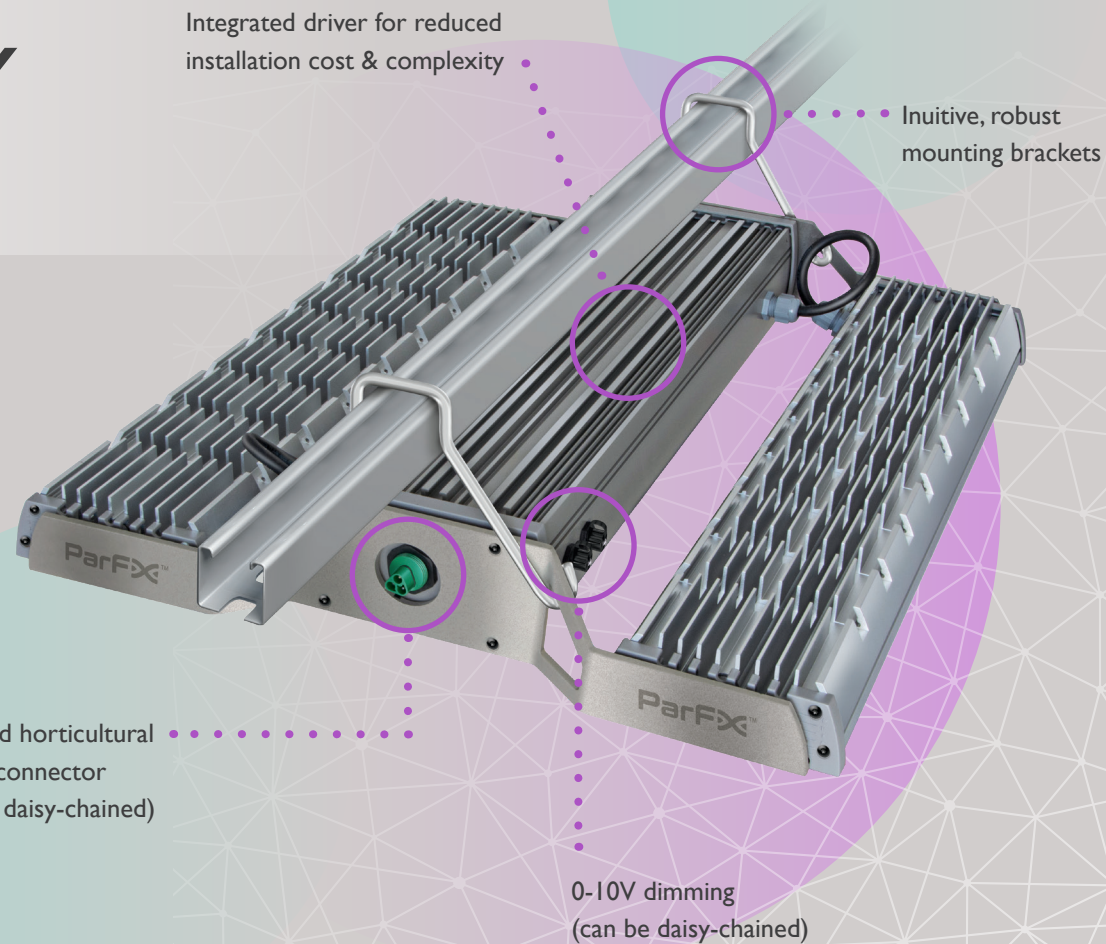
The integrated fins on the top of the aluminum LED modules are engineered to dissipate heat through conduction for optimal passive thermal management. The integrated driver is housed in an aluminum enclosure that is separated from the two LED modules to allow for maximum airflow around the electronics compartment, further allowing for passive cooling.



TRUE PLUG-AND-PLAY RETROFIT

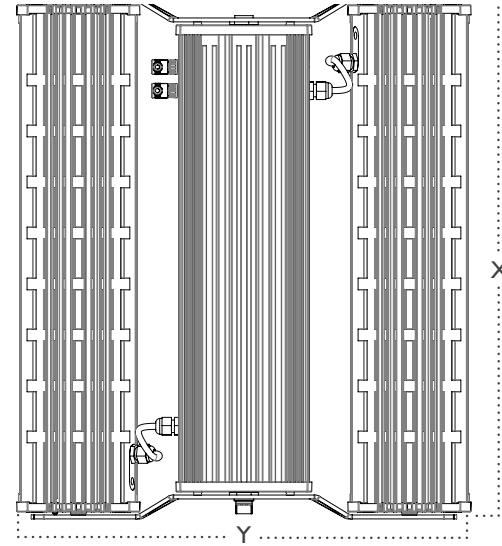
A standard horticultural power connector, integrated driver and intuitive mounting brackets allow for a true plug-and-play retrofit of existing HID lighting installations.

The integrated driver and the ability to daisy-chain both the power and 0-10V control, enables reduced installation cost & complexity.

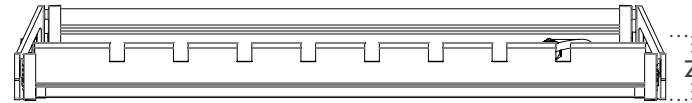


TECHNICAL SPECIFICATIONS*

Rated Main Voltage		208-400V				
Amperage (max)		208V	240V	277V	347V	400V
RWMB	HO	3.17	2.74	2.38	1.90	1.65
	LO	1.83	1.59	1.37	1.10	0.95
DAYLIGHT	HO	3.10	2.68	2.32	1.86	1.61
	LO	1.82	1.58	1.37	1.09	0.95
Power		RWMB		Daylight		
HO		658.5W		643.8W		
LO		380.7W		379.0W		
Light Source		LED				
System Efficacy		RWMB		Daylight		
HO		3.2 $\mu\text{mol}/\text{J}$		2.6 $\mu\text{mol}/\text{J}$		
LO		3.3 $\mu\text{mol}/\text{J}$		2.6 $\mu\text{mol}/\text{J}$		
Flux		RWMB		Daylight		
HO		2100 $\mu\text{mol}/\text{s}$		1673 $\mu\text{mol}/\text{s}$		
LO		1255 $\mu\text{mol}/\text{s}$		978 $\mu\text{mol}/\text{s}$		
Power Factor		>0.97				
Input Frequency		50/60Hz				
Ambient Operating Temp.		40°C (max)				
Lifetime		50,000 hrs [†]				



DIMENSIONS	
Length (x)	26.14 in (664 mm)
Width (y)	22.80 in (579 mm)
Height (z)	3.81 in (96.7 mm)
Weight	34.1 lb. (15.5 kg)



[†]Accurate to $\pm 10\%$





P.L. LIGHT SYSTEMS

4800 HINAN Drive
Beamsville, ON Canada, L3J 1C1

Telephone: 905.563.4133

Toll Free: 1.800.263.0213

Facsimile: 905.563.0445

www.pllight.com