

Ants, Structural Invaders, and Ultimate Pest Enablers

Worldwide, thousands of socially organized ant species manipulate, farm, and protect destructive plant feeding disease carrying insect pests in exchange for their fecal excrement, commonly referred to as "Honeydew". Ants attack, maim, and destroy Earth's natural ecosystem pest controllers.

AntPro® destroys invasive ant populations, and cockroaches while providing continuous protection for homes, properties, fruit & nut trees, and ornamentals.



Ant harvesting honeydew from aphid on grapevine.

Fact, anyone benefits who has invasive ants present. Structural infestations, and or plants especially fruit & nut trees with signs of pest damage with accompanying diseases caused by any of 30,000+ plant piercing, sucking & chewing insect species. Documented, including in EPA and USDA sponsored university research studies **AntPro** destroys ants and their colonies. Enables nature's arthropod predators, beneficial insects & spider to provide effective natural biological extermination of plant feeding, disease vectoring pests.

When ant populations are greatly reduced and eliminated dispensers can remain dormant, deployed in place performing as sentinels providing continuous, minimal maintenance preventive pest protection.

Note: ants are known to transport mealybugs and aphids to choice plant feeding locations expanding their infestations. To learn more visit www.kmantprollc.com and download our free **KM Urban & Grower's Guides©** PDFs, for important information about ants, plant pests and nature's natural predators.

Consequences: pesticides impact the Earth's ecosystem besides requiring repeated use and product changes. In order to avoid insect adaptation resistance broad spectrum insecticides and broadcast baits indiscriminately kill numerous non-targeted lifeforms, including absolutely essential micro-nutrient generating organisms in soil.

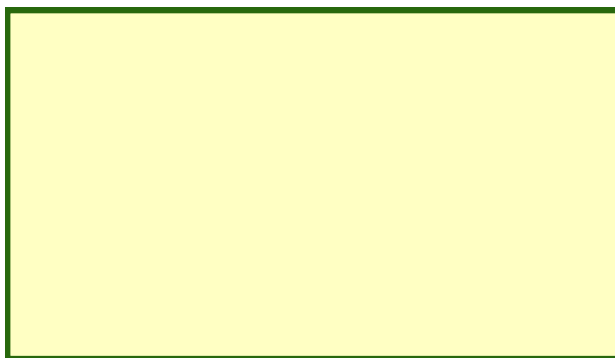


Napa, California: **AntPro®** destroys ant populations, enabling nature's beneficial predators access to feed on and destroy mealybugs, scale and other disease carrying grape damaging insects.

AntPro® is actively engaged protecting homes & commercial properties, food crops, gardens, hospitals, military, and public facilities including parks, zoos and historic sites.

Internationally, AntPro is engaged protecting endangered ecosystem's flora and fauna at UNESCO Heritage Foundation, and other significant conservation sites by destroying invading super organism tramp ant species.

For your free PDF of **KM's** ecologically intuitive **Growers Guide**, and for assistive information phone Ken at 941-445-4252, or email asken@kmantprollc.com



KM AntPro LLC

New website - www.kmantprollc.com

P.O. Box 967 Nokomis, FL 34274

Made in the USA 941-445-4252 US & INTL Pat. 6,467,217,
7,278,235 & 9,750,237

KM **AntPro®**

Home, Farm & Garden Ant & Roach Ecologically Friendly

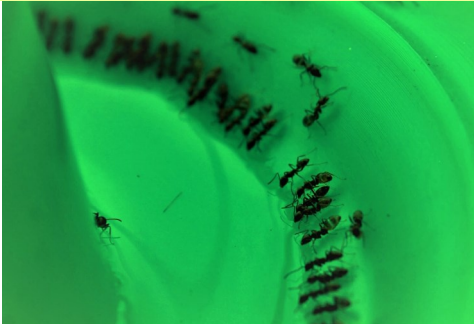


Insect Baiting System®

*Ant foragers locate and activate **AntPro®** Dispensers. They consume and store enough slow acting liquid bait in their interior social stomachs to feed up to 12 ants each time they return to their nests. In addition, they recruit encountered ants by sample sharing, creating several bait retrieval pheromone marked super highways to and from the bait dispensers to their nests. **The Ultimate Trojan Horse Deception;** these ants feed their queens, nursery brood, and nest workers the bait's slow acting toxicant, unknowingly destroying their nests, and colonies from within.*

AntPro® Also, kills individual cockroaches, including Asian and German.

Proven Reliable, Long-Term, Ant Protection



The **KM AntPro® Insect Activated Bait Dispenser®** is a rugged durable delivery device made of ultra-violet resistant polypropylene. When combined with its low-toxicity liquid ant bait it provides consistent long-term invasive ant colonies depopulation, and standby reinfestation preventive monitoring. Refillable, it provides several years of reliable service. **AntPro** destroys ant colonies in moderately infested areas without refilling, then once the colonies are eliminated dispensers remain dormant monitoring as sentinels to prevent area re-infestation.

How It Works

AntPro dispensers provide **full 360-degree** insect access to their interior feeding pool area, allowing various ant species, roaches and other targeted insects unimpeded access to enter and feed simultaneously. When dispensers are charged with bait and activated a minimal attractant sample of bait is released into unit's interior pool area. As ants consume the bait they activate the dispenser's liquid surface tension stress ducts allowing the pool to be replenished in proportion to the actively feeding population of ants. The combined patented gravity-feed and surface tension bait release technology greatly extends the effective use life of the bait. The reservoir stored bait is not exposed to adverse life forms and other environmental contaminants while providing ants access to bait delivery on their demand.

AntPro is weather tolerant and is also tamper resistant. It comes with an attachable stake to secure it to earth surfaces when applicable.

AntPro System's exterior ant control protects crops, homes, plants, properties and gardens with the least invasive and most ecological friendly method of insect management available.

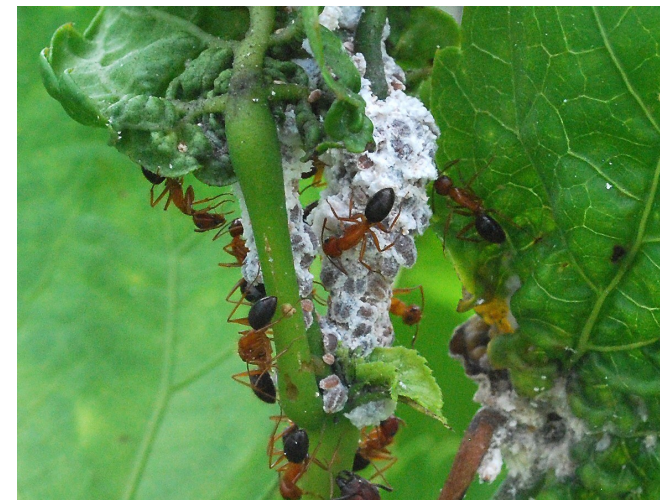
Whether it's Argentine, carpenter, white-footed, imported fire ants, or other invasive exotic tramp ants **AntPro** destroys whole colonies, not just foraging ants providing you with full time pest control, and added security.

Summary of Advantages

- The **AntPro® Insect Baiting System Dispensers** provide around the clock insect control; primarily depopulation of area ant nests.
- insect activated bait delivery, plus long-term control and monitoring.
- Uses only low toxic bait with environmentally sound ingredients developed to eliminate queens and total ant colonies not just foraging ants that represent a minor percentage of the colony and are easily replaced in greater numbers.
- Does not harm bees and other pollinators.



Foraging ant scouts create positive pheromone recruitment trails for other ants to strategically located **AntPro®** dispensers. After existing ant colonies are destroyed or greatly reduced the system continues to provide 24/7 long term monitoring protection against re-infestation.



What's just outside your window: Above, carpenter ants are farming pink mealybugs on a Hibiscus plant for their precious fecal excrement, honeydew. These mealybugs are just 1 of 30,000+ plant damaging disease carrying insects, thousands of ant species farm, protect, and manipulate to harvest their honeydew rich in sugars and amino acids.

beneficial insects, spiders & soil nutrient producing organisms. As, is the result with the use of systemics and other broad-spectrum insecticides.

- Baits are restricted to reservoir and enclosed feeding pool when dispensers are activated, with targeted insects having 360 degree access to feed.
- Ants feeding in the pool area trigger the release of bait as it is consumed.
- Access is restricted to only ants, roaches, and other targeted insects.
- Dispensers deployed strategically as per KM use instruction are capable of destroying exotic super colony ant nests.
- **AntPro's** proven performance has been documented in *University of California and other institutional research studies*. Including additional governments and universities research projects, both domestic and international, including in EPA and USDA-CSREES Exotic/Invasives sponsored Pest Projects.
- **Customer Support:** Q & A guidance is just a phone call away for **KM AntPro System** customers seeking assistance.