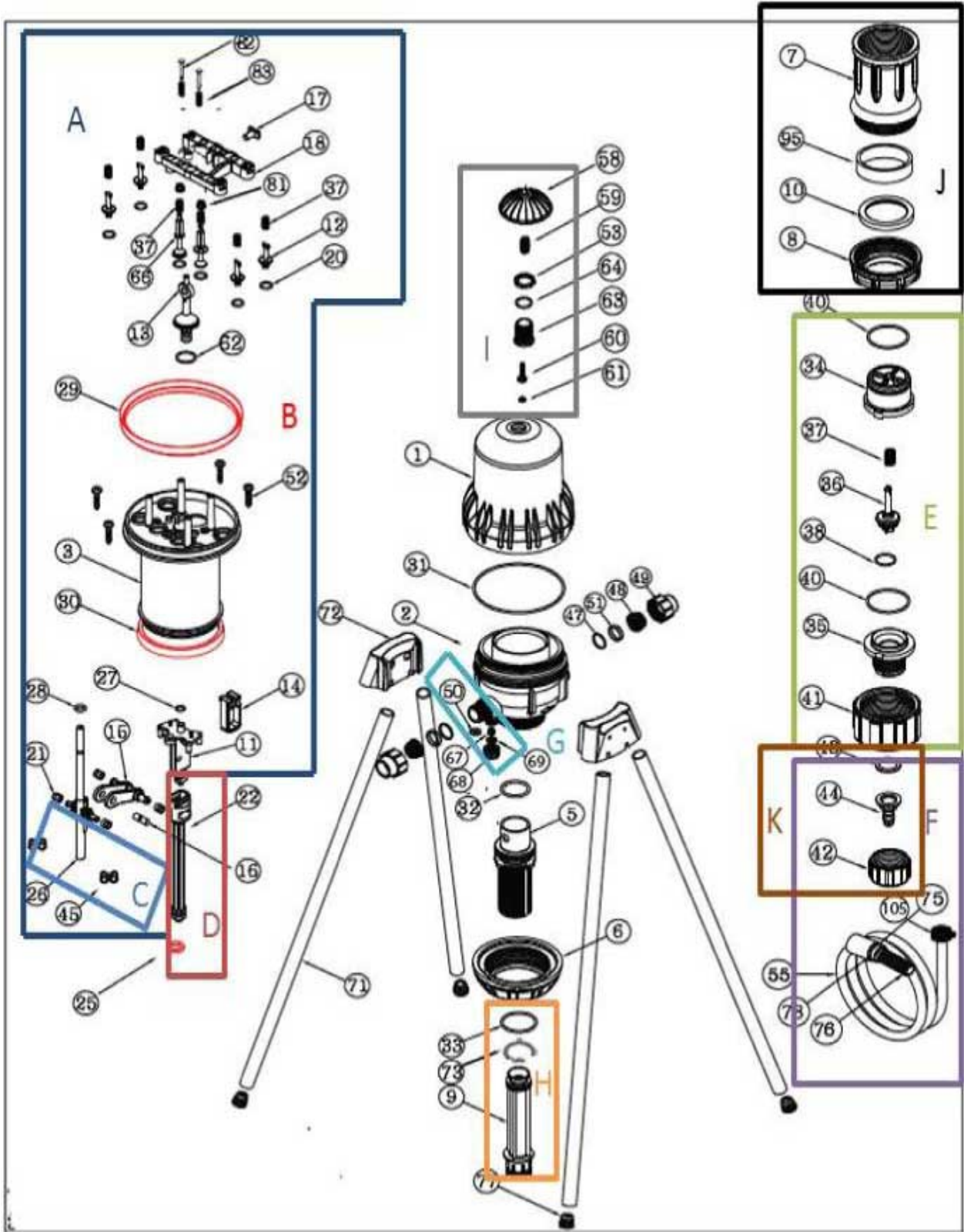


TF 5.001, TF 5.002, TF 5.005
AIR RELEASE



NO.	DESCRIPTION	PART #
A	TF5 Engine Assembly	35200000006
B	TF5 1% Lip Seal Kit, with Piston Seal	35200000001
	TF5 2% Lip Seal Kit, with Piston Seal	35200000002
	TF5 5% Lip Seal Kit, with Piston Seal	35200000005
C	Plastic Engine Spring Kit, TF5 TF10	35100000045
D	TF5 Chemical Piston Seal 1% - Kit - w/ connecting rod	35200000019
	TF5 Chemical Piston Seal 2% - Kit - w/ connecting rod	35200000020
	TF5 Chemical Piston Seal 5% - Kit - w/ connecting rod	35200000021
E	Check Valve Kit, 19 MM Barb - 1410, TF5, TF10	35200000059
F	Suction Tube Kit, 1% and 2% models	36000000021
	5% Suction Tube Kit w/ weight, strainer, 1410, TF10	36000000028
G	TF5 anti-siphon kit	352260.9999
H	TF5 Suction Cylinder Kit, 1%, w/ o-ring	35200000009
	TF5 Suction Cylinder Kit, 2% w/ o-ring	35200000011
	TF5 Suction Cylinder Kit, 5% w/o-ring	35200000012
I	TF5, TF10, TF25 Air Release Kit	35000000349
J	TF5 Adjustment Collar and Nut Kit	35200000028
K	12MM Hose Barb Kit, 1% and 2% models	22454752122
44	19MM Hose Barb Only, 5% models.	32454759122
TF5 EDPM O-ring Kit		35200000057
1	TF5 Cover/Dome	35201011301
2	TF5 Body, 1" NPT	35202031302
5	TF5 Cylinder Support - 1% (no o-ring)	35204012305
	TF5 Cylinder Support - 2% (no o-ring)	35204022305
	TF5 Cylinder Support - 5% (no o-ring)	35204052305
6	Cylinder Support Nut	35205011806
7	Adjustment Sleeve	35207011807
8	Latch Nut	35208011808
10	Cylinder Support Spacer	35217013110
30	TF5 Lower Piston Dual Lip Seal	35290012230
31	TF5 Dome Oring	38023562231
33	MIXRITE TF 5.001 CHEMICAL CYLINDER O-RING 2-321 FOR 1% MODEL	38023212233
	MIXRITE TF 5.005 CHEMICAL CYLINDER O-RING 2-219, 2% and 5%	38022192233
	Cylinder Support O-ring (BUNA)	38050072232
	Cylinder Support O-ring (EPDM)	38050073232
41	Check Valve Nut	36030622100
71	Stand Legs - send 4 per unit	38000004171
72	Blue Bracket for Legs	35125011872
73	Guide Ring, Cylinder Support	35228011168
Not Shown	Foot valve for viscous Products 1/2", 3/4" barb (1% and 2% models)	57.12FTV
	Foot valve for viscous Products 1" barb (5% models)	57.34FTV