



PAPER

CONSERVE PESTICIDES AND/OR WATER & ENHANCE CROP PRODUCTIVITY WITH SPOTON® PAPER



- Visualize spray coverage
- Visualize droplet size and uniformity
- Visualize off-target application

Assess several types of spray applications:

- Boom spraying
- Airblast spraying
- Aerial spraying
- Handheld/Backpack spraying

Available in multiple sizes:

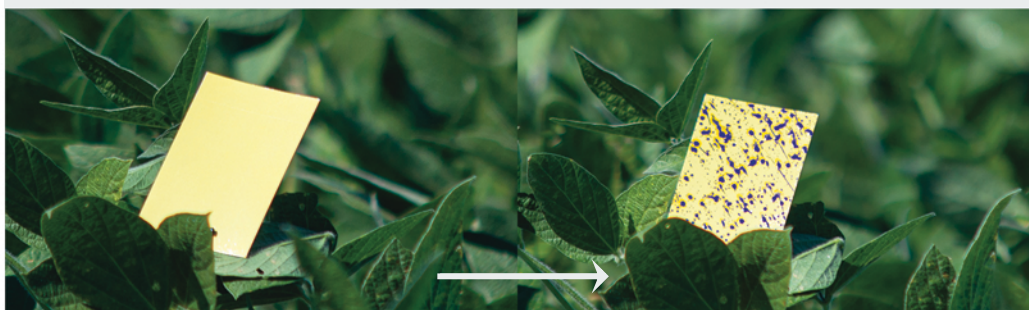
- 1" x 3" (item #32930, 50 pieces)
- 2" x 3" (item #32920, 25 pieces)
- 9.5" x 11.75" (item #34430, 5 pieces)

Resealable package includes tweezers & desiccant packet to improve shelf life.

DROPLET DIAMETER TO SPOT SIZE CORRECTION TABLE

Observed Stain Diameter (microns)	Correction Factor	Corrected Droplet Diameter (microns)
100	1.454	69
200	1.766	113
300	1.949	154
400	2.079	192
500	2.179	229
600	2.262	265
700	2.331	300
800	2.391	335
900	2.444	368
1000	2.492	401
1100	2.535	434
1200	2.574	466
1300	2.610	498
2000	2.804	713

Our field data does not support reliable detection of drops smaller than 60-90 microns. We have detected drops down to 30 microns but not reliably in all humidity and temperature conditions.



THE SPOTON® PAPER DIFFERENCE!

Better High Humidity Tolerance | Doesn't Warp In The Field
Long, 3 Year Shelf Life (in sealed package) | Made In The USA

SpotOn® Paper is sensitive to moisture, turning from yellow to blue, to show spray distribution!

To use, simply attach Paper to select areas: clip/staple to branches, leaves, or vines; affix to wooden laths (for field spraying); or attach to blocks spaced 1-3 meters (3-10 feet) apart for aerial spraying. Note location on the back each card. After spraying, wait for paper to dry, then collect and analyze.

innoquestinc.com

sales@innoquestinc.com

815.337.8555

